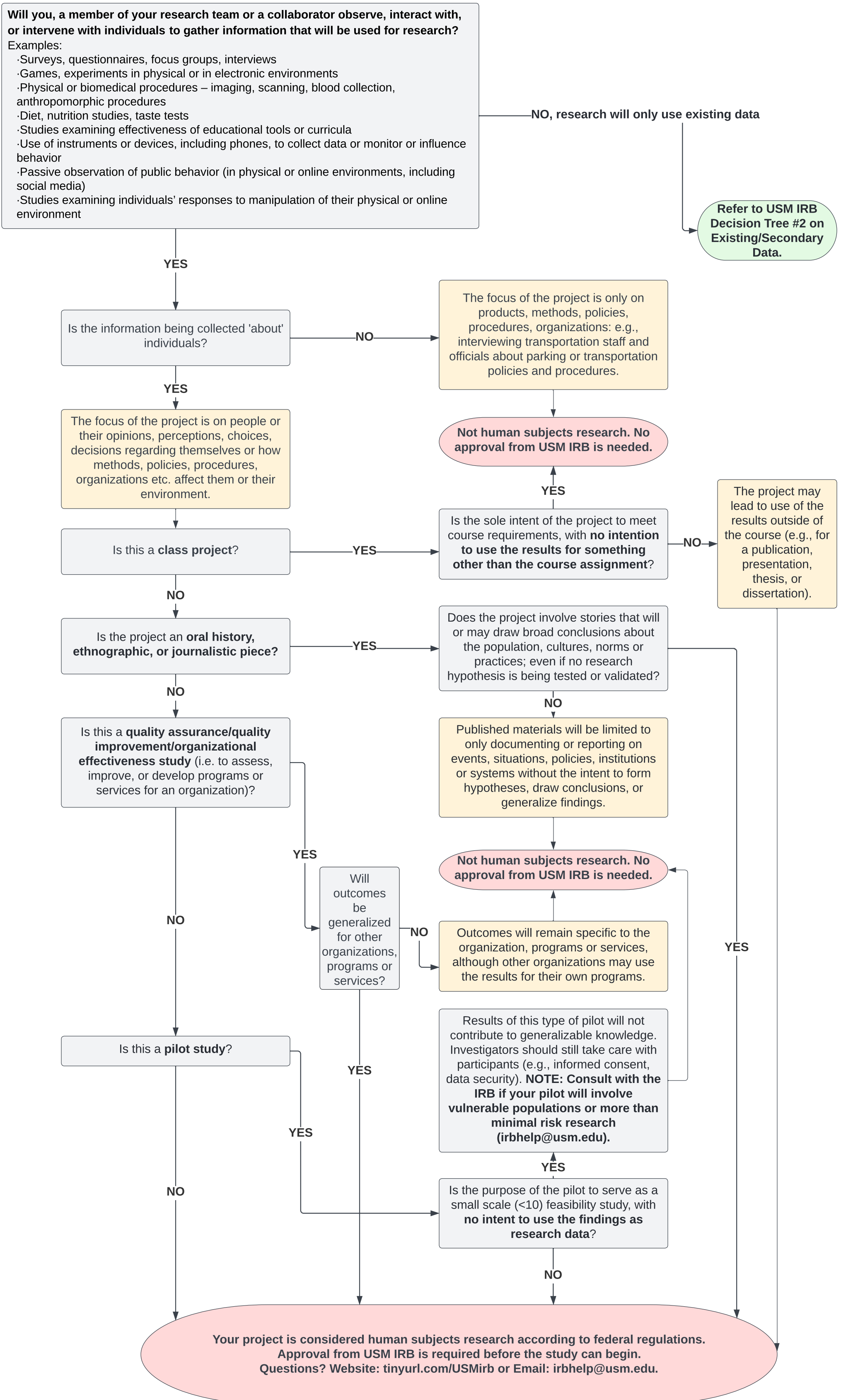


**Does Your Project Require Approval From USM's IRB?**  
Decision Tree #1



Source:  
This decision tree was adapted with approval from Cornell University's Research Office (<https://researchservices.cornell.edu/compliance/human-research>) in accordance with federal regulations (<https://www.hhs.gov/ohrp/regulations-and-policy/regulations/45-cfr-46/revise-common-rule-regulatory-text/index.html>).

\*\*If you determine that your study does not require IRB approval and would like an official Review Not Required letter, please email Samuel.Bruton@usm.edu.