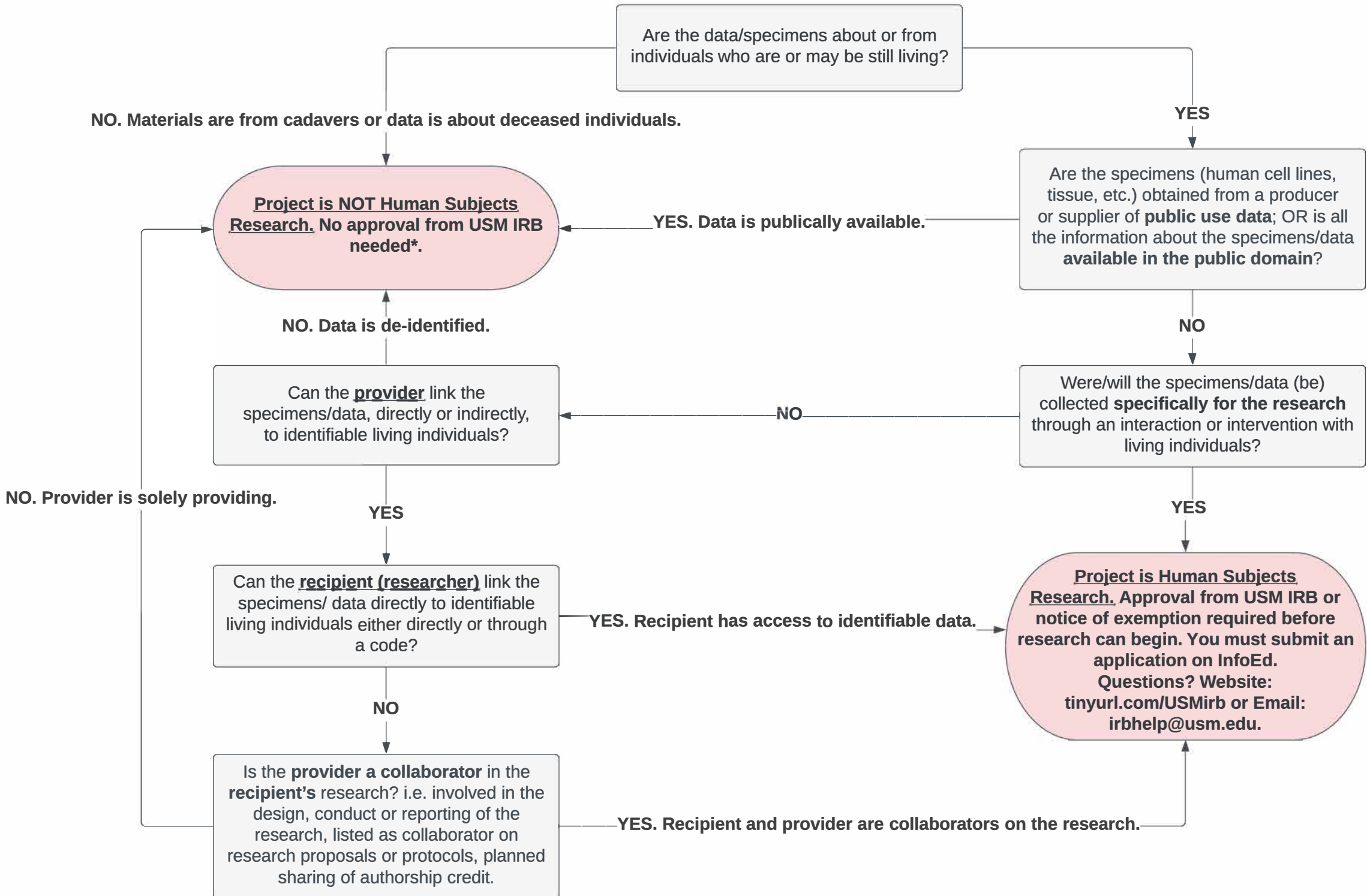


## Does Your Research Involving Secondary or Existing Data, Documents or Biological Specimens Require Approval by USM's IRB? Decision Tree #2



*\*If acquiring the data or specimens will require a Data Sharing Agreement between the provider and recipient, you must submit a Data Sharing Form ([tinyurl.com/USMirbForms](https://tinyurl.com/USMirbForms)) to [IRB@usm.edu](mailto:IRB@usm.edu).*