

## Does Your Project Require Approval From USM's IRB? Decision Tree #1

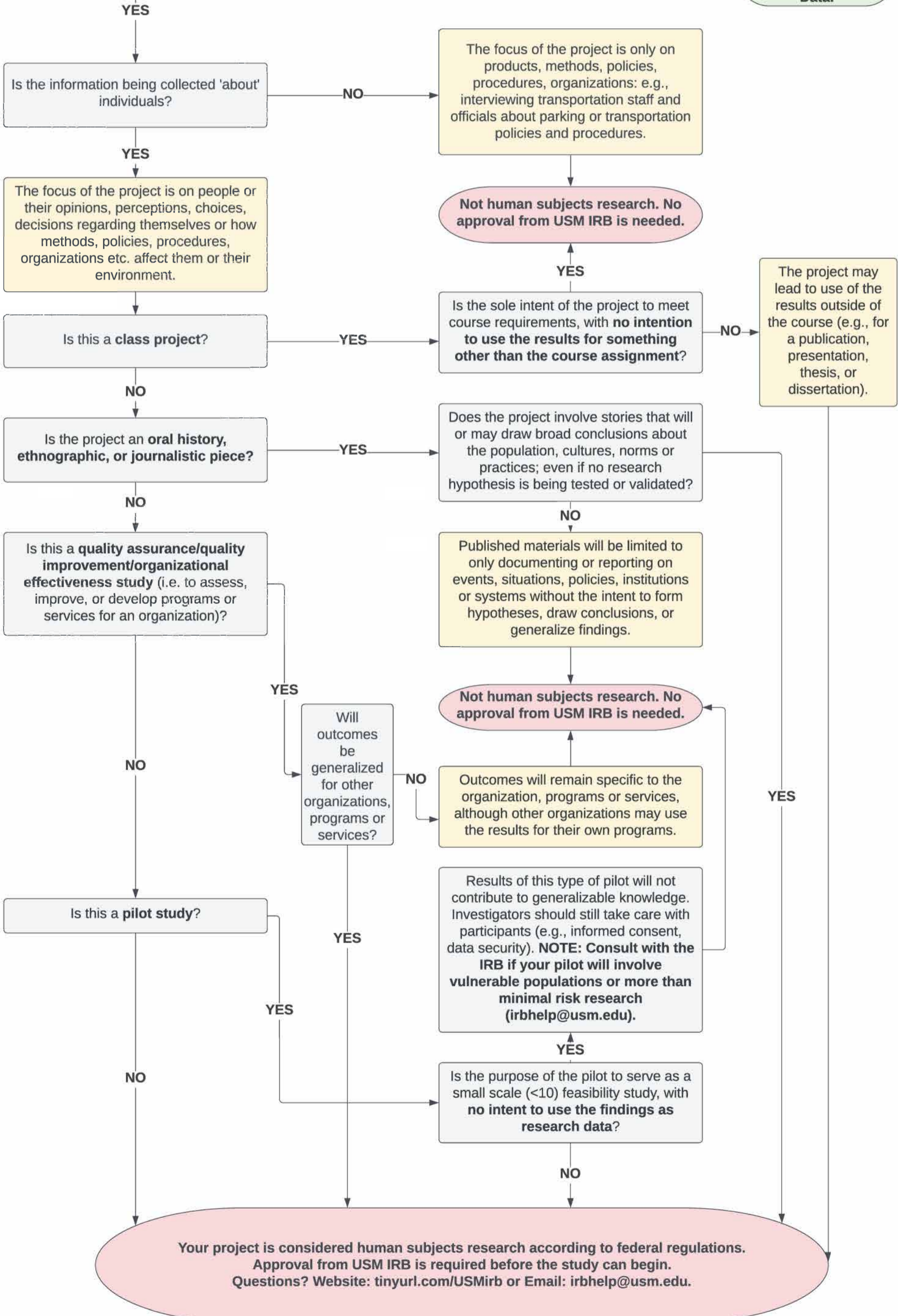
Will you, a member of your research team or a collaborator observe, interact with, or intervene with individuals to gather information that will be used for research?

Examples:

- Surveys, questionnaires, focus groups, interviews
- Games, experiments in physical or in electronic environments
- Physical or biomedical procedures – imaging, scanning, blood collection, anthropomorphic procedures
- Diet, nutrition studies, taste tests
- Studies examining effectiveness of educational tools or curricula
- Use of instruments or devices, including phones, to collect data or monitor or influence behavior
- Passive observation of public behavior (in physical or online environments, including social media)
- Studies examining individuals' responses to manipulation of their physical or online environment

NO, research will only use existing data

Refer to USM IRB Decision Tree #2 on Existing/Secondary Data.



Source:

This decision tree was adapted with approval from Cornell University's Research Office (<https://researchservices.cornell.edu/compliance/human-research>) in accordance with federal regulations (<https://www.hhs.gov/ohrp/regulations-and-policy/regulations/45-cfr-46/revised-common-rule-regulatory-text/index.html>).