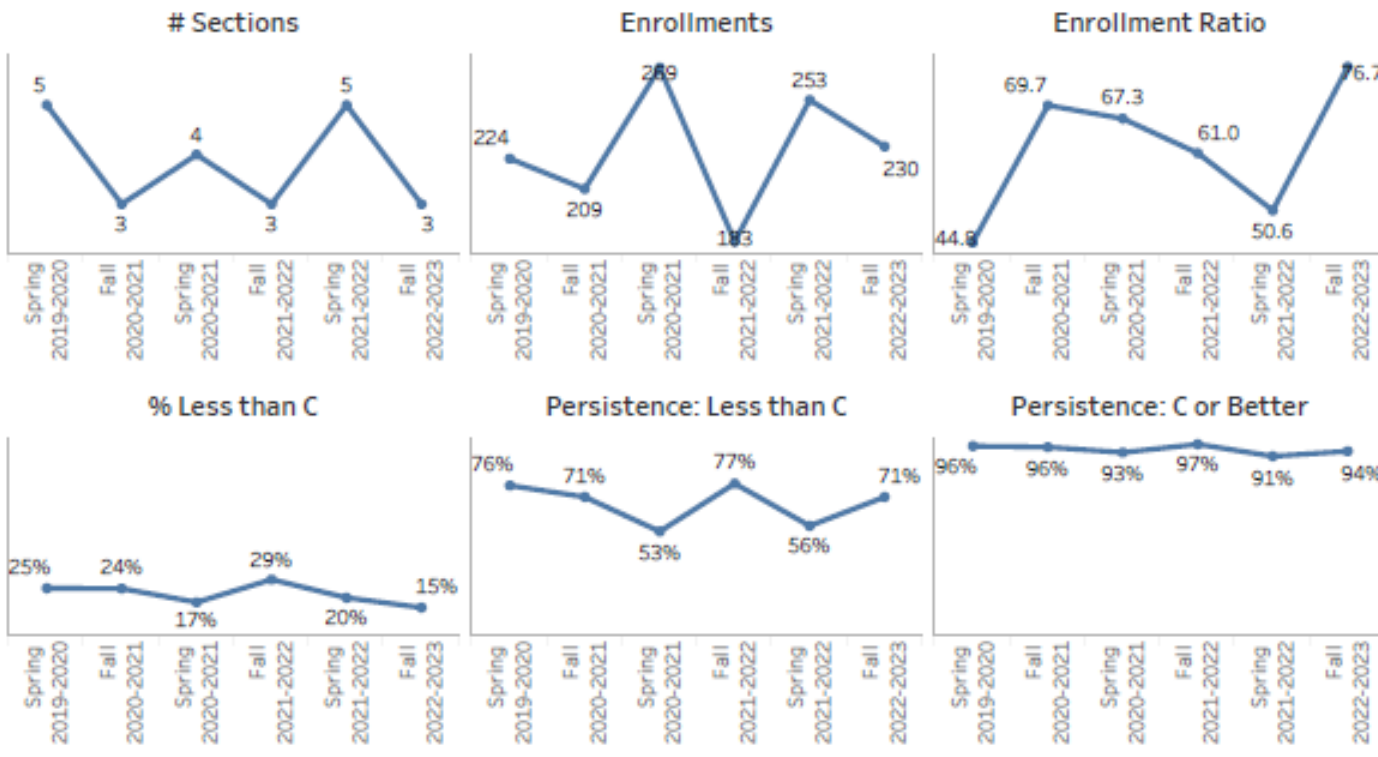


Class Campus	# Sections		Enrollments		Course Capacity		Enrollment Ratio	
	Spring 2021-2022	Fall 2022-2023	Spring 2021-2022	Fall 2022-2023	Spring 2021-2022	Fall 2022-2023	Spring 2021-2022	Fall 2022-2023
All Campuses	5	3	253	230	333	237	0.76	0.97
Hattiesburg	2	2	205	206	260	213	0.79	0.97
Online	1		19		25		0.76	
USM Gulf Coast	2	1	29	24	48	24	0.60	1.00

Section Offerings and Enrollment Narrative

	Spring 2021-2022			Fall 2022-2023		
	C or Better	Less than C	Withdrew	C or Better	Less than C	Withdrew
Headcount	180	50	23	189	34	7
Persisted Headcount (incl Grad)	164	28	13	177	24	5
Persisted % (inc. Grad)	91.1%	56.0%	56.5%	93.7%	70.6%	71.4%
% of Headcount	71.1%	19.8%	9.1%	82.2%	14.8%	3.0%

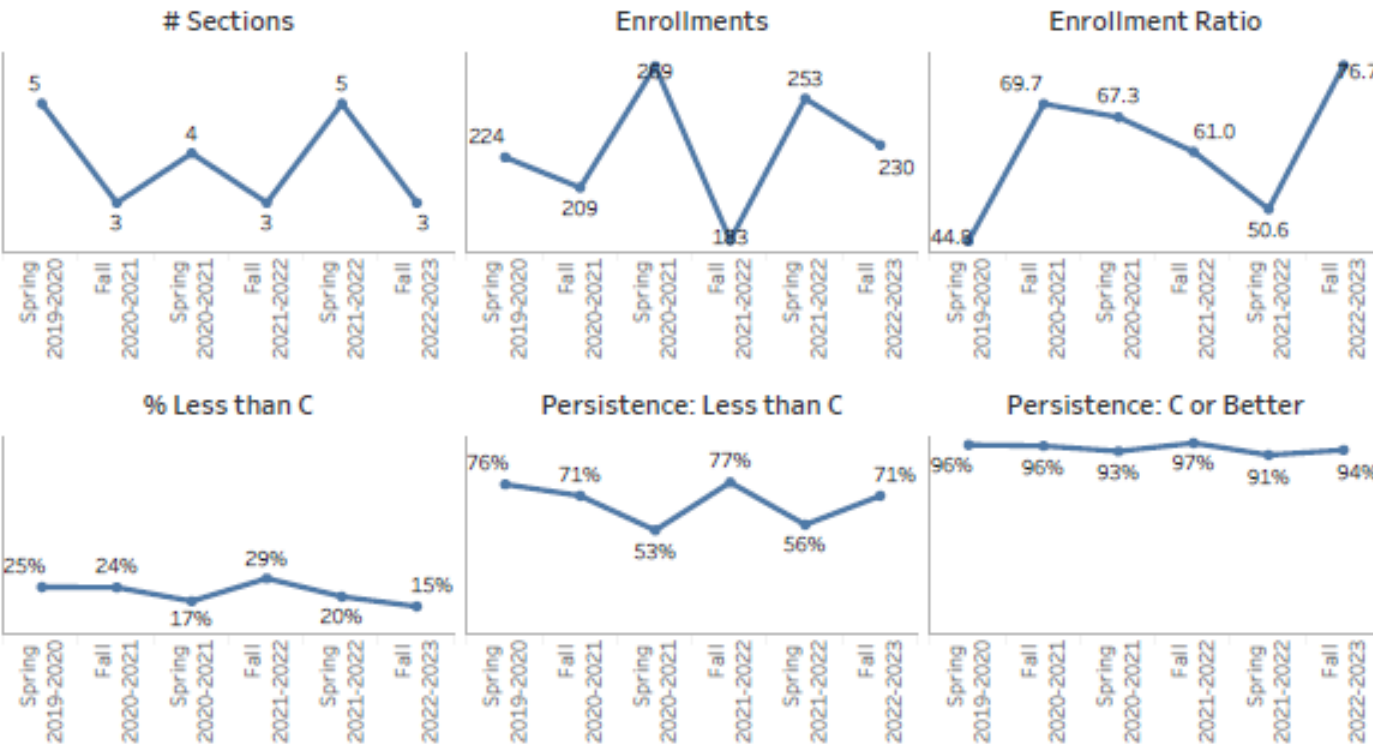
Course Completion and Persistence



Additional Visuals

Class Campus	# Sections		Enrollments		Course Capacity		Enrollment Ratio	
	Spring 2021-2022	Fall 2022-2023	Spring 2021-2022	Fall 2022-2023	Spring 2021-2022	Fall 2022-2023	Spring 2021-2022	Fall 2022-2023
All Campuses	5	3	253	230	333	287	0.76	0.97
Hattiesburg	2	2	205	206	260	263	0.79	0.97
Online	1		19		25		0.76	
USM Gulf Coast	2	1	29	24	48	24	0.64	1.00

Enrollment Ratio =
Enrollments/Course
Capacity
(You may want to convert to
a percentage for analysis.)



Additional figures provided
for further analysis (in
narratives). Used to
compare multiple years of
data.

	Spring 2021-2022			Category	Fall 2022-2023		
	C or Better	Less than C	Withdrew		C or Better	Less than C	Withdrew
Headcount	180	50	23		189	34	7
Persisted Headcount (incl Grad)	164	28	13		177	24	5
Persisted % (incl. Grad)	91.1%	56.0%	56.5%		93.7%	70.6%	71.4%
% of Headcount	71.1%	19.8%	9.1%		82.2%	14.8%	3.0%

Course Completion and Persistence

Complete the following tables with data provided in the HelioCampus document.

Fall 2022-2023 Course Persistence to Spring 2022-2023

C or better				Less than C			
Headcount	% of total Headcount	Persistence Headcount	% Persisted to Spring	Headcount	% of total Headcount	Persistence Headcount	% Persisted to Spring
189	82%	177	93.7%	34	14.8%	24	70.6%
Withdrew				Total			
Headcount	% of total Headcount	Persistence Headcount	% Persisted to Spring	Headcount	Persisted Headcount	% Persisted to Spring	
7	3%	5	71%	230	206	90%	

Calculate Total Headcount, Total Persisted Headcount, and % Persisted to Spring using the available data

- Persisted Headcount: number of students in category who persisted from Fall 2022-2023 to Spring 2022-2023
- Persisted %: the % of students in the category that persisted
- % of Headcount: percent of students in the category compared to all categories combined (C or better, Less than C, Withdrew)